

## HEALTH SERVICES

Telehealth Ontario 1-866-797-0000

### Public Health Units

Peterborough County—City 705-743-1000  
Haliburton, Kawartha, Pine Ridge District  
1-866-888-4577  
Lindsay 705-324-3569  
Haliburton 705-454-1391

### Drug & Alcohol Registry of Treatment

1-800-565-8603  
www.dart.on.ca

### Centre for Addiction and Mental Health

1-800-463-6273

Mental Health Service Information Ontario  
(24/7) 1-866-531-2600  
www.mhsio.on.ca

### Local Canadian Mental Health Association

24 hour Crisis 1-866-995-9933  
City of Kawartha Lakes 705-328-2704  
Haliburton Highlands 705-286-4575  
Peterborough 705-748-6711

### Workplace Safety Insurance Board (WSIB)

Information and assistance, compensation, services & pensions for employees disabled through employment, vocational rehabilitation.

Ontario 1-800-387-0750  
Guelph (Agricultural Sector) 1-800-267-9461  
www.wsib.on.ca

Farm Safety Association 1-800-361-8855  
www.farmsafety.ca

### Poison Information Centre

1-866-268-9017

## ANIMAL CARE

### Ontario Farm Animal Council (OFAC)

Assists farmers in providing adequate or improved care for their animals and/or in following practices that meet industry standards. The Helpline is a farmer helping farmer service of advice and referral. Calls received by the service are given to the appropriate commodity group(s) for follow-up.

Animal Care Helpline: 519-837-1326  
www.ofac.org

### Ontario Society for the Prevention of Cruelty to Animals (OSPICA)

1-888-668-7722

www.ontairospca.ca

Haliburton County (covered by Muskoka Branch)

705-645-6225

Peterborough Humane Society 705-745-4722

Victoria County Humane Society 705-878-4618

For additional information,  
factsheets and resources, contact:

### Agricultural Information Contact Centre:

1-877-424-1300

E-mail: ag.info.omafra@ontario.ca

### Northern Ontario Regional Office:

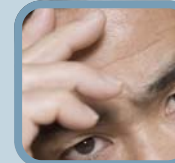
1-800-461-6132

www.ontario.ca/omafra



## FINANCIAL RESOURCES AND SUPPORT SERVICES FOR FAMILIES In...

Haliburton County, City of Kawartha Lakes  
and Peterborough County.



Prepared by:

Ontario Ministry of Agriculture,  
Food and Rural Affairs  
Client Services Branch  
Lindsay Resource Centre  
322 Kent Street West  
Lindsay, Ontario  
K9V 4T7

Phone: 705-324-6125

Fax: 705-324-1638

## EMPLOYMENT SERVICES

### Service Canada

General Enquiries 1-800-O-Canada  
(1-800-622-6232)

Employment Insurance (EI) 1-800-206-7218

### Local Centres:

Lindsay 705-324-3562  
Peterborough 705-750-4500

### Employment Ontario

1-800-387-5656

### Job Connect Program

Haliburton 705-457-2020  
Lindsay 705-878-9325  
Peterborough 705-748-9110  
705-749-5520, ext. 2261  
Victoria County Career Services 705-328-0180

### Employment Resource Centres

Lindsay 705-878-7092  
Peterborough 705-748-8830, ext.3310

### Ontario Works

City Kawartha Lakes/Haliburton Social Services  
Alliance— Lindsay 1-877-324-9870  
Minden 1-877-324-9870  
Peterborough (City) 705-748-8830

## FINANCIAL RESOURCES

### Growing Forward

Growing Forward, a federal-provincial-territorial initiative, supports the development and implementation of best practices in four key areas: Environment and Climate Change; Food Safety and Traceability; Business Development; and Biosecurity. Participants are encouraged to develop strategies across all areas to meet their business goals through a variety of information sessions and workshops as well as one-on-one training and technical assistance.

Business Development for Farm Businesses Growing Forward Business Development for Farm Businesses incorporates self-assessment and action plan development with a range of cost-share advisory services and skills development opportunities to help reach your farm business goals.

Business Development for Farm Businesses offers:

#### Growing Your Farm Profits Workshops

- Learn how to do a self-assessment on your farm business. There is no cost to attend this workshop.

#### Action Plan Review and Sign-off

- Having your action plan reviewed and signed off is the next step towards accessing cost-share opportunities.

#### Farm Financial Assessment

- Cost-share funding is available to access a professional Farm Financial Advisor. The program covers up to \$2400 of eligible costs to hire an Advisor. The participant pays \$100.
- If you are experiencing severe financial difficulties, you may be able to access the Farm Financial Assessment without completing the Growing Your Farm Profits Workshop.

#### Agriculture Skills Development

- Identifying a specific need for farm-related training and skills development in your action plan enables you to access cost-share funding up to 50 per cent to a maximum of \$3000.

## FINANCIAL RESOURCES cont'd

### Advanced Business Planning

- Eligible farm businesses will receive cost-share funding to work with an Advanced Planning Consultant for up to 50 per cent to a maximum of \$8000.

### Business Plan Implementation

- To help you implement elements of your Advanced Business Plan, eligible farm businesses can receive cost-share funding for up to 50 per cent to a maximum of \$3000 for one-time non-capital costs.

### For more information:

To learn more about other Growing Forward Programs like environment and climate change, food safety and traceability, and biosecurity, please contact the Ontario Ministry of Agriculture Food and Rural Affairs by:

Phone: 1-888-479-3931

Website: [www.ontario.ca/growingforward](http://www.ontario.ca/growingforward)

Email: [growingforward@ontario.ca](mailto:growingforward@ontario.ca)

**Growing Forward, a federal-provincial-territorial initiative**

### Farm Credit Canada

Provides business and financial solutions for farm families and agri-business [www.fcc-sca.ca](http://www.fcc-sca.ca)  
**Head office/Regina** 1-888-332-3301  
Lindsay 1-800-387-3232

### Farm Debt Mediation

The Farm Debt Mediation Service provides farmers and their creditors with mediation services pursuant to the Federal [Farm Debt Mediation Act](#) (FDMA) to help them arrive at a mutually satisfactory arrangement. The service is private and confidential.  
[www.agr.gc.ca/fdms](http://www.agr.gc.ca/fdms) 1-866-452-5556

### Local Credit Counselling Resources

Lindsay 1-877-776-7675  
Peterborough 1-800-274-1611  
Ontario Association of Credit Counselling Services  
[www.oaccs.com](http://www.oaccs.com) 1-888-746-3328

## EMOTIONAL SUPPORT AND REFERRAL

### The Farm Line

The Farm Line is a confidential emotional support, information and counseling telephone service that is available across Ontario for farmers and their families. Trained peer counselors talk to the caller, identify resources in the caller's area and help the caller determine the steps to follow to address the caller's needs.

1-888-451-2903

[www.thefarmline.ca](http://www.thefarmline.ca)

Email: [thefarmline@thefarmline.ca](mailto:thefarmline@thefarmline.ca)

### Local Distress Centres

Life Line Telecare-Lindsay 705-878-4411  
Telecare Orillia 705-325-9534  
Telecare Peterborough 705-745-2273

## FAMILY SUPPORT SERVICES

### Alcoholics Anonymous

Peterborough 705-745-6111  
Haliburton Highlands 705-324-9900  
Al-Anon Mtg. Information Line 1-800-425-2666

### Addiction Help Line

1-800-272-1937

### Gambling Help Line

1-888-230-3505

### Kids Help Line—to 21 yrs

1-800-668-6868

### Children's Aid Society

Haliburton 1-800-661-1979  
Lindsay 1-800-567-9136  
Peterborough 1-800-661-2843

### Children with Severe Disabilities

1-800-646-3209

### Victim Crisis Assistance & Referral

Services of Victoria County 1-800-574-4401

## FAMILY SUPPORT SERVICES cont'd

### Ontario Disability Support Program

Lindsay 1-800-565-3554  
Peterborough 1-800-663-8560

### Local Food Banks

#### Haliburton County

Village of Haliburton, 4C's 705-457-3331  
Minden (Tues,Wed&Fri) 705-286-6838

#### Kawartha Lakes (City)

Coboconk 705-454-9351  
Dunsford 705-793-2516  
Little Britain & Mariposa 705-786-2899  
Omemee 705-799-2098  
Woodville 705-439-3939  
Bobcaygeon (Tue&Fri) 705-738-2415

#### Peterborough County

Hastings & Roseneath (Tue&Fri) 705-696-1105  
Havelock (Tue&Wed) 705-778-5586  
Lakefield 705-652-8302  
North Kawartha/Apsley 705-656-1748  
Norwood & District 705-639-1777

### Salvation Army - Community & Family Services

Peterborough 705-742-4391  
Lindsay 705-324-9511  
Fenelon Falls 705-887-3031

### Community Living Ontario 1-800-278-8025

[www.communitylivingontario.ca](http://www.communitylivingontario.ca)