

## HEALTH SERVICES

**Telehealth Ontario** 1-866-797-0000  
Free access to a registered nurse, 24 hours/day,  
7 days/week. [www.healthyontario.com](http://www.healthyontario.com)

**Public Health Units**  
Chatham-Kent 519-352-7270  
Windsor-Essex 1-800-265-5822 or 519-258-2146

**Centre for Addiction and Mental Health**  
1-800-463-6273  
1-800-661-1111

**Local Mental Health Association**  
Mental Health Kent 519-436-6100  
Mental Health Clinic 519-351-6144  
Mental Health Service 1-866-531-2600  
Information Ontario [WWW.mhsio.on.ca](http://WWW.mhsio.on.ca)

**Poison Information Centre**  
(for pesticide poisonings and pesticide injuries)  
Toronto 1-800-268-9017  
Ottawa (Bilingual) 1-800-267-1373  
Hearing Assistance (TTY) 1-877-750-2233

**West Nile Virus Information**  
Ministry of Health INFOline. 1-800-268-1154  
[www.health.gov.on.ca](http://www.health.gov.on.ca)

**Drugs & Alcohol Treatment Information Line (DART)** 1-800-565-8603

**Workplace Safety Insurance Board (WSIB)**  
Information and assistance, compensation,  
services & pensions for employees disabled  
through employment, vocational rehabilitation.  
Windsor: 1-800-265-7380  
London: 1-800-265-4752  
Toronto: 1-800-387-0080

**Farm Safety Association** 1-800-361-8855  
[www.farmsafety.ca](http://www.farmsafety.ca)

## HEALTH SERVICES cont'd

**Canadian Food Inspection Agency**  
Food Safety Hotline 1-800-701-2737

**Food Safety Network Hotline:**  
General Information call: 1-866-503-7638

## ANIMAL CARE

### Ontario Farm Animal Council (OFAC)

Assists farmers in providing adequate or improved care for their animals and/or in following practices that meet industry standards. The Helpline is a farmer helping farmer service of advice and referral. Accepts calls from farmers who need emergency assistance as well as from anyone who witnesses farm animals kept in unacceptable conditions. Calls received by the service are given to the appropriate commodity group(s) for follow-up.

**Animal Care Helpline:** 519-837-1326  
[www.ofac.org](http://www.ofac.org)

**Ontario Society for the Prevention of Cruelty to Animals (OSPCA)**  
Hotline: 1-888-668-7722  
Chatham: 519-354-1713

**For additional information,  
factsheets and resources, contact:**

**Agricultural Information Contact Centre:**  
1-877-424-1300  
**E-mail:** [ag.info.omafra@ontario.ca](mailto:ag.info.omafra@ontario.ca)

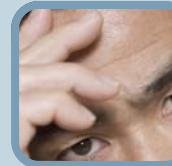
**Northern Ontario Regional Office:**  
1-800-461-6132

[www.ontario.ca/omafra](http://www.ontario.ca/omafra)



## FINANCIAL RESOURCES AND SUPPORT SERVICES FOR FARM FAMILIES In...

*Chatham-Kent*



Prepared by:  
Ontario Ministry of Agriculture,  
Food and Rural Affairs  
Client Services Branch  
Ridgetown Resource Centre  
P.O. Box 400, 120 Main Street  
Ridgetown, Ontario  
NOP 2C0  
Phone: 519-674-1690  
Fax: 519-674-1564

## EMPLOYMENT SERVICES

**Service Canada** 1-800-206-7218

**Service Canada Centre**  
Chatham-Kent 519-380-6800  
[www.servicecanada.gc.ca](http://www.servicecanada.gc.ca)  
120 Wellington St. W., Chatham ON N7M 4V9  
Employment Resource Center, information and assistance.

**Ontario Works**  
Chatham-Kent 519-351-8573

**Service Ontario**  
Chatham 519-360-1998

## FINANCIAL RESOURCES

### Growing Forward

Growing Forward, a federal-provincial-territorial initiative, supports the development and implementation of best practices in four key areas: Environment and Climate Change; Food Safety and Traceability; Business Development; and Biosecurity. Participants are encouraged to develop strategies across all areas to meet their business goals through a variety of information sessions and workshops as well as one-on-one training and technical assistance.

Business Development for Farm Businesses  
Growing Forward Business Development for Farm Businesses incorporates self-assessment and action plan development with a range of cost-share advisory services and skills development opportunities to help reach your farm business goals.

Business Development for Farm Businesses offers:

#### Growing Your Farm Profits Workshops

- Learn how to do a self-assessment on your farm business. There is no cost to attend this workshop.

#### Action Plan Review and Sign-off

- Having your action plan reviewed and signed off is the next step towards accessing cost-share opportunities.

#### Farm Financial Assessment

- Cost-share funding is available to access a professional Farm Financial Advisor. The program covers up to \$2400 of eligible costs to hire an Advisor. The participant pays \$100.
- If you are experiencing severe financial difficulties, you may be able to access the Farm Financial Assessment without completing the Growing Your Farm Profits Workshop.

#### Agriculture Skills Development

- Identifying a specific need for farm-related training and skills development in your action plan enables you to access cost-share funding up to 50 per cent to a maximum of \$3000.

## FINANCIAL RESOURCES cont'd

### Advanced Business Planning

- Eligible farm businesses will receive cost-share funding to work with an Advanced Planning Consultant for up to 50 per cent to a maximum of \$8000.

### Business Plan Implementation

- To help you implement elements of your Advanced Business Plan, eligible farm businesses can receive cost-share funding for up to 50 per cent to a maximum of \$3000 for one-time non-capital costs.

### For more information:

To learn more about other Growing Forward Programs like environment and climate change, food safety and traceability, and biosecurity, please contact the Ontario Ministry of Agriculture Food and Rural Affairs by:

Phone: 1-888-479-3931

Website: [www.ontario.ca/growingforward](http://www.ontario.ca/growingforward)

Email: [growingforward@ontario.ca](mailto:growingforward@ontario.ca)

***Growing Forward, a federal-provincial-territorial initiative***

### Farm Credit Canada

Provides business and financial solutions for farm families and agri-business

[www.fcc-sca.ca](http://www.fcc-sca.ca)

Head office/Regina 1-888-332-3301  
Chatham 519-380-8810

### Farm Debt Mediation

The Farm Debt Mediation Service provides farmers and their creditors with mediation services pursuant to the Federal [Farm Debt Mediation Act](#) (FDMA) to help them arrive at a mutually satisfactory arrangement. The service is private and confidential.

1-866-452-5556

[www.agr.gc.ca/progser/fdms\\_e.phtml](http://www.agr.gc.ca/progser/fdms_e.phtml)

## EMOTIONAL SUPPORT AND REFERRAL

### The Farm Line

The Farm Line is a confidential emotional support, information and counseling telephone service that is available across Ontario for farmers and their families. Trained peer counselors talk to the caller, identify resources in the caller's area and help the caller determine the steps to follow to address the caller's needs regarding topics including financial difficulties, stress, grief, family problems, serious accidents and traumatic events.

1-888-451-2903

[www.thefarmline.ca](http://www.thefarmline.ca)

Email: [thefarmline@thefarmline.ca](mailto:thefarmline@thefarmline.ca)

### Local Distress Centres

London & District 519-667-6711

Senior Helpline (SHL) 519-667-6600

[www.londondistresscentre.com](http://www.londondistresscentre.com)

Sarnia & Lambton County 519-336-3000

1-888-347-8737

[www.familycounselingctr.ca](http://www.familycounselingctr.ca)

Windsor & Essex County 519-256-5000

[www.dcwindsor.com](http://www.dcwindsor.com)

## FAMILY SUPPORT SERVICES

Alcoholics Anonymous 1-866-242-8811

Addiction Help Line 1-877-235-0400

Gambling Help Line 1-888-230-3505

### Childrens Aid Society

Promoting the well being of children and their families.

Chatham 519-352-0440

### Crisis Intervention Centre/Mental Health Kent

Chatham-Kent 519-351-6144

Provides 16 hour confidential crisis counseling for residents of

Family Services Kent 519-354-6221

Provides support and counseling for individuals, couples and families. Stress, family and credit counseling available. Fee based on income. Evening hours available.

## FAMILY SUPPORT SERVICES cont'd

### Social Services—Municipality of Chatham-Kent

General welfare assistance, one time emergency aid may be available for those who do not qualify for welfare. Central intake number.

519-351-8573

### Tilbury Information and Help Centre

Provide food and clothing, training and information, referral to various government and community organizations.

519-682-2268

### Women's Centre

Emergency Shelter for Women, confidential counseling for women and children.

519-354-6360

### Local Food Banks

Chatham 519-351-8381

Wallaceburg 519-355-5161

St. Vincent De Paul 519-627-2013

### Salvation Army - Community & Family Services

Chatham 519-354-1430

Blenheim 519-355-5161

Ridgetown 519-355-5161

Wallaceburg 519-627-8257

Some local service clubs and churches in your area may offer related programs.

### Community Living

Chatham-Kent 519-352-1174